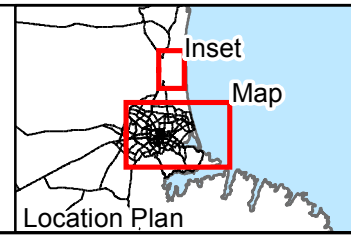
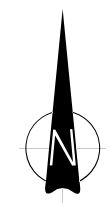
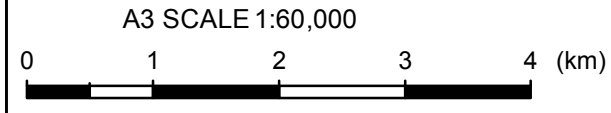


LEGEND

Ground Surface Observations

- No observed ground cracking or ejected liquefied material
- Minor ground cracking but no observed ejected liquefied material
- No lateral spreading but minor to moderate quantities of ejected material
- No lateral spreading but large quantities of ejected material
- Moderate to major lateral spreading; ejected material often observed
- Severe lateral spreading; ejected material often observed

Notes: Road Database supplied by Terralink International Ltd. Rivers, lagoons and coastline licensed under Creative Commons Attribution 3.0 New Zealand and sourced from LINZ



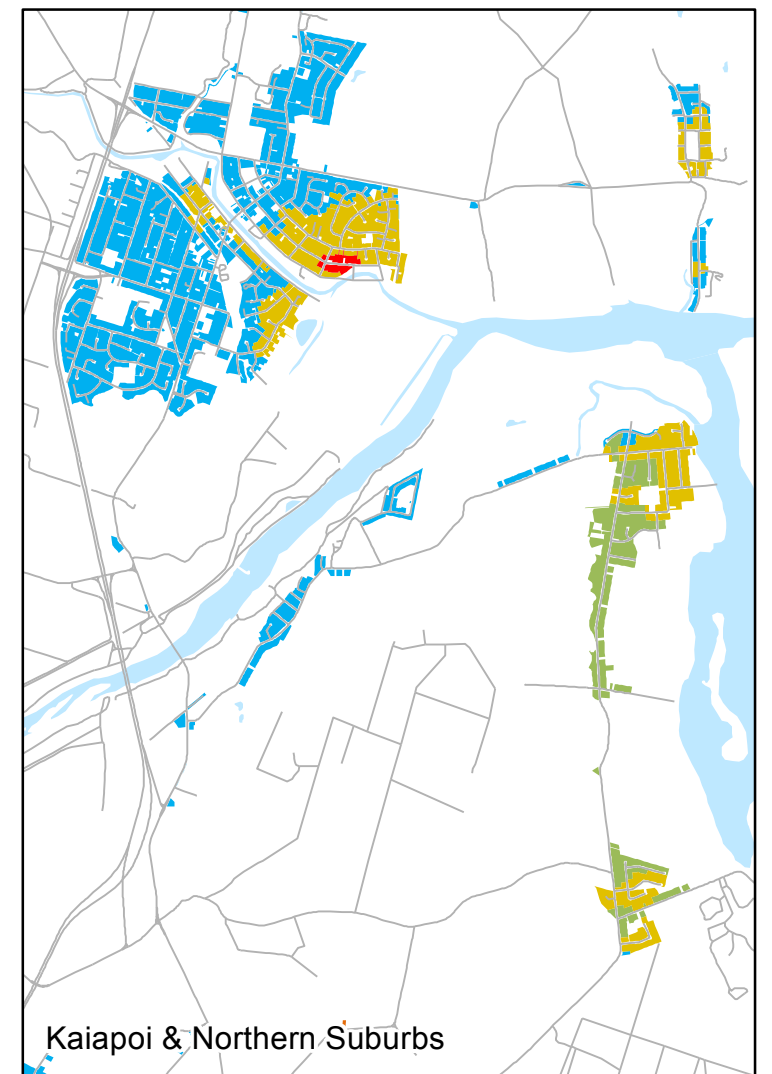
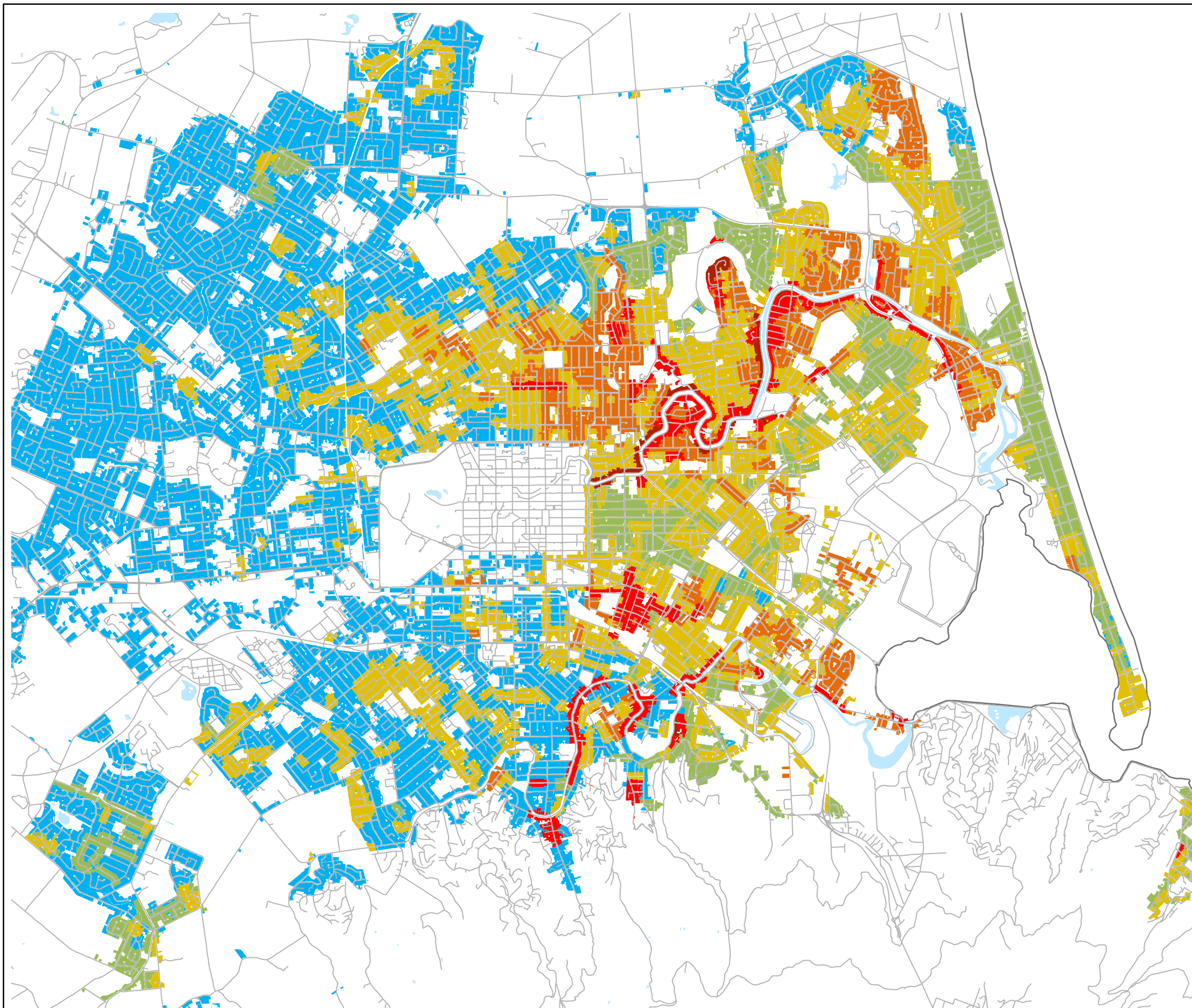
DRAWN	HKB	Mar.13
CHECKED		
APPROVED		
ARCFILE 52020-0200-RLF02		
SCALE (AT A3 SIZE) 1:60,000		
PROJECT No. 52000.200		

**EARTHQUAKE COMMISSION
CHRISTCHURCH CITY & KAIAPOI**

**Liquefaction and Lateral Spreading Observations
Post June 2011 (Event B)**

FIGURE No. _____ Rev. 0

Date: 4/03/2013 Time: 11:09:19 a.m.

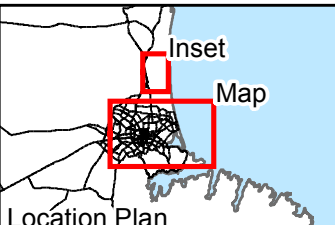
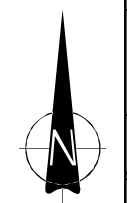
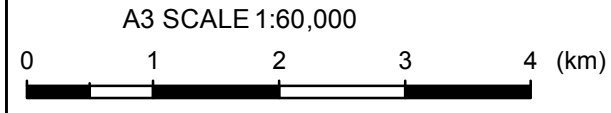


LEGEND

Ground Surface Observations

- No observed ground cracking or ejected liquefied material
- Minor ground cracking but no observed ejected liquefied material
- No lateral spreading but minor to moderate quantities of ejected material
- No lateral spreading but large quantities of ejected material
- Moderate to major lateral spreading; ejected material often observed
- Severe lateral spreading; ejected material often observed

Notes: Road Database supplied by Terralink International Ltd. Rivers, lagoons and coastline licensed under Creative Commons Attribution 3.0 New Zealand and sourced from LINZ. Crown Copyright Reserved



DRAWN	CXP	Feb.13
CHECKED		
APPROVED		
ARCFILE 52020-0200-LFF03		
SCALE (AT A3 SIZE) 1:60,000		
Prepared By Tonkin & Taylor Ltd. Ref. 52020.0200		

**EARTHQUAKE COMMISSION
CHRISTCHURCH CITY & KAIAPOI**

Liquefaction and Lateral Spreading from Road Observations Post June 2011 (Event B)

FIGURE No. **Figure A7.B** Rev. **0**

Date: 25/02/2013 Time: 1:31:25 p.m.