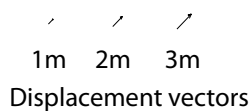
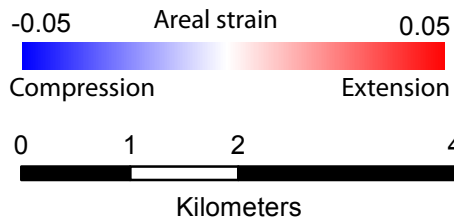
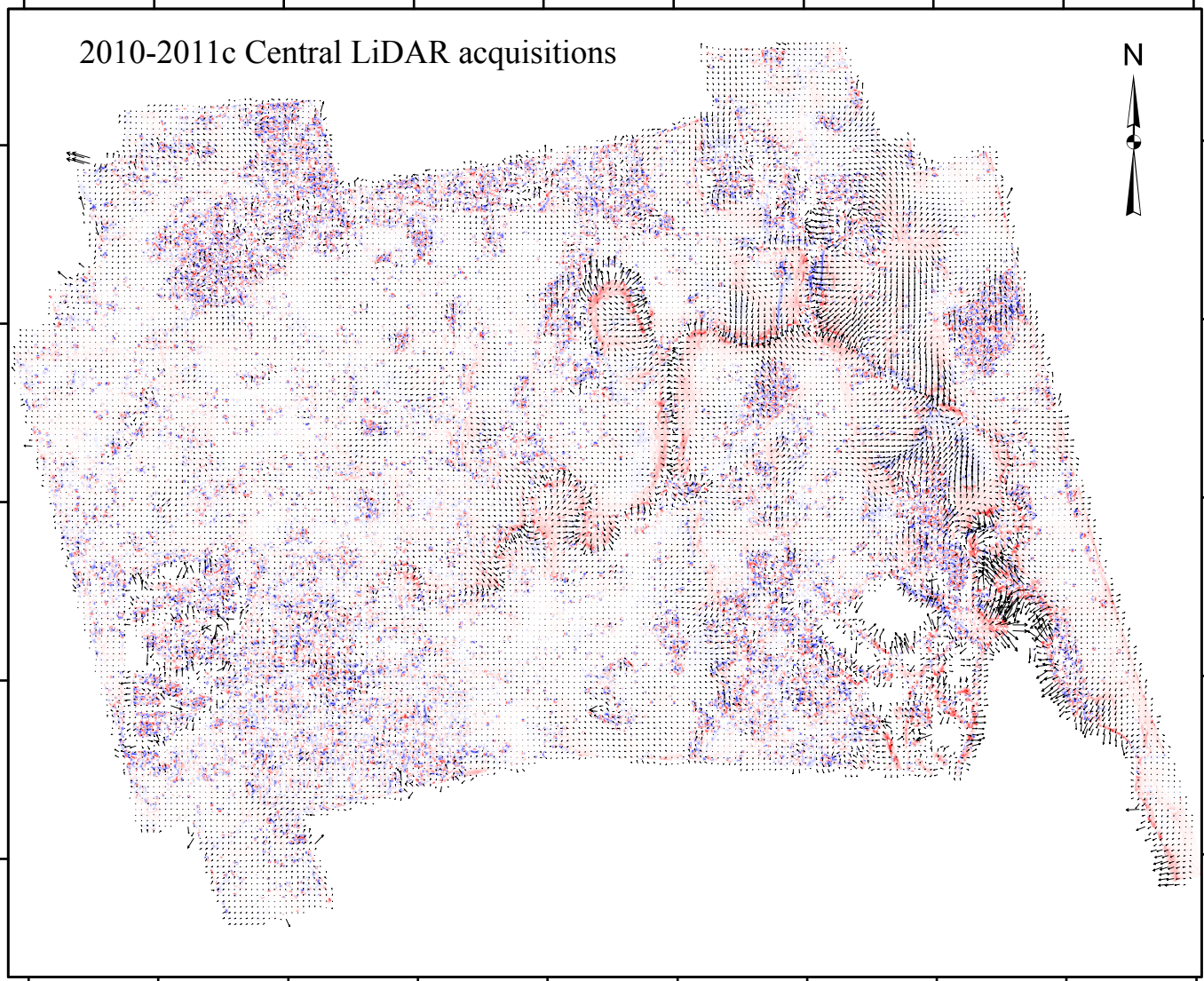


172°36' E 172°37' E 172°38' E 172°39' E 172°40' E 172°41' E 172°42' E 172°43' E 172°44' E 172°45' E

2010-2011c Central LiDAR acquisitions

43°29' S
43°30' S
43°31' S
43°32' S
43°33' S



530 S. Lake Ave., Suite 320,
Pasadena, CA 91101, USA
www.imaginlabs.com

Map and analysis produced by Imagin' Labs Corporation, USA. LiDAR analysis based on the COSI-Corr technology, patents pending 5067 12/340,693 and 5067-P 61/011,671, California Institute of Technology. COSI-Corr © California Institute of Technology, Pasadena, California. ALL RIGHTS RESERVED.