

172°38'0"E

172°39'0"E

172°40'0"E

172°41'0"E

172°42'0"E

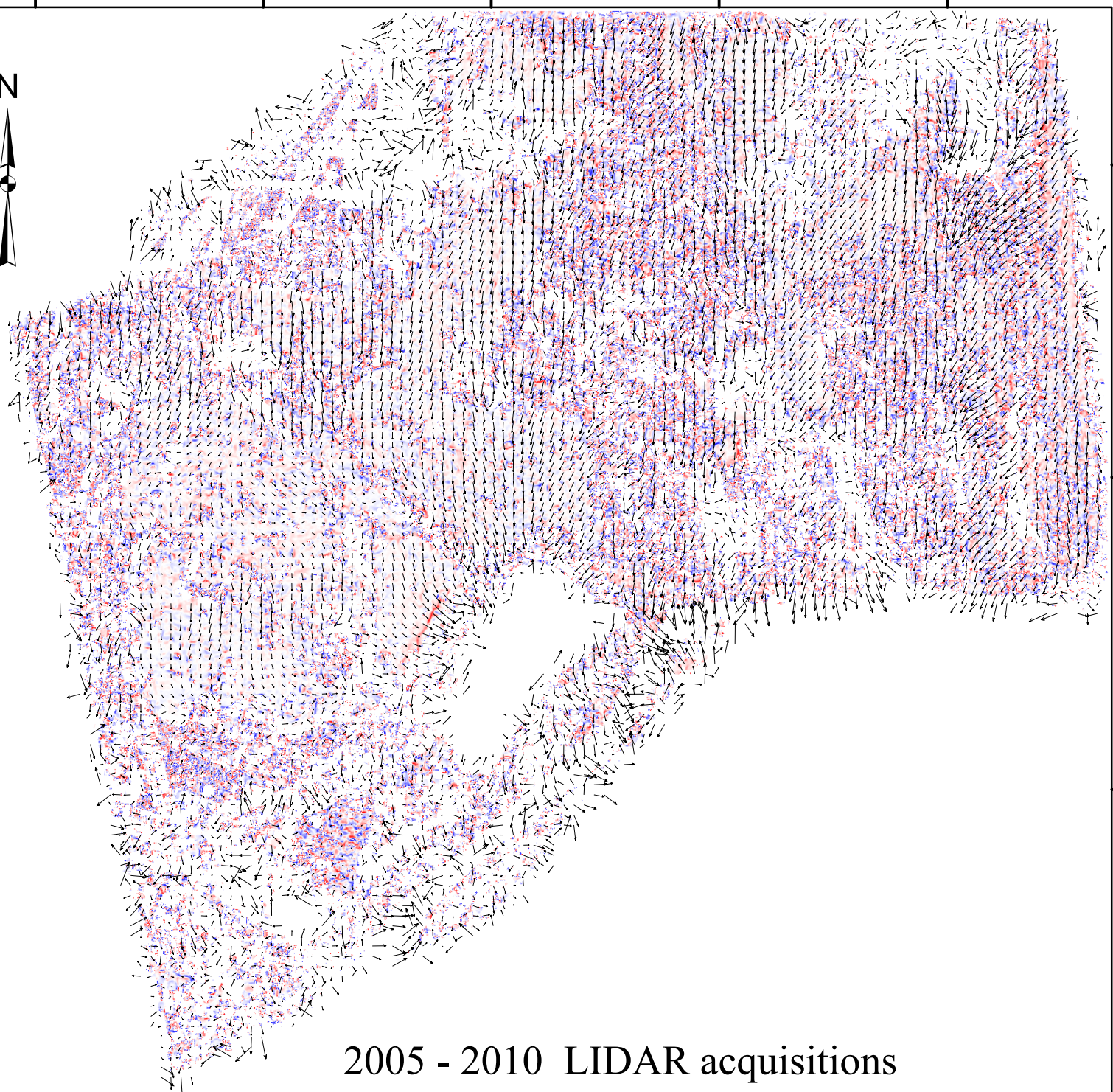


43°22'0"S

43°23'0"S

43°24'0"S

43°25'0"S



### 2005 - 2010 LIDAR acquisitions

-0.15      Areal strain      0.15



Compression

Extension

0      0.5      1      2

Kilometers

50 cm   1m   2m  
Displacement vectors

Imagin' Labs Corporation  
530 S. Lake Ave, #320  
Pasadena, CA 91101, USA

[info@imaginlabs.com](mailto:info@imaginlabs.com)