

172°36'E 172°37'E 172°38'E 172°39'E 172°40'E 172°41'E 172°42'E 172°43'E 172°44'E 172°45'E

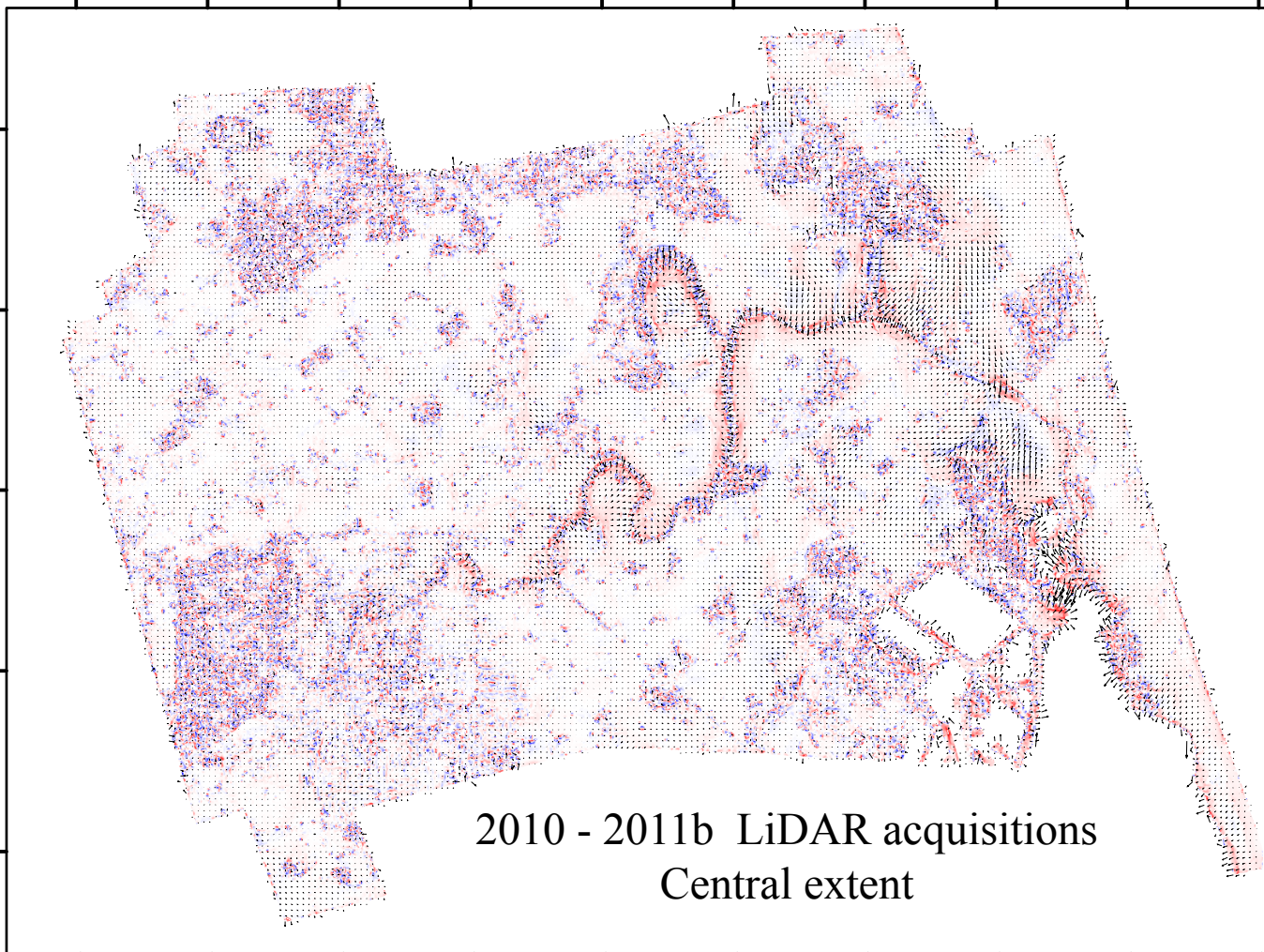
43°29' S

43°30' S

43°31' S

43°32' S

43°33' S



2010 - 2011b LiDAR acquisitions  
Central extent

N



-0.05 Areal strain 0.05



Compression

Extension

0 1 2 4



Kilometers

50 cm 1m 2m  
Displacement vectors

Imagin' Labs Corporation  
530 S. Lake Ave, #320  
Pasadena, CA 91101, USA

[info@imaginlabs.com](mailto:info@imaginlabs.com)