

172°39' E

172°40' E

172°41' E

172°42' E

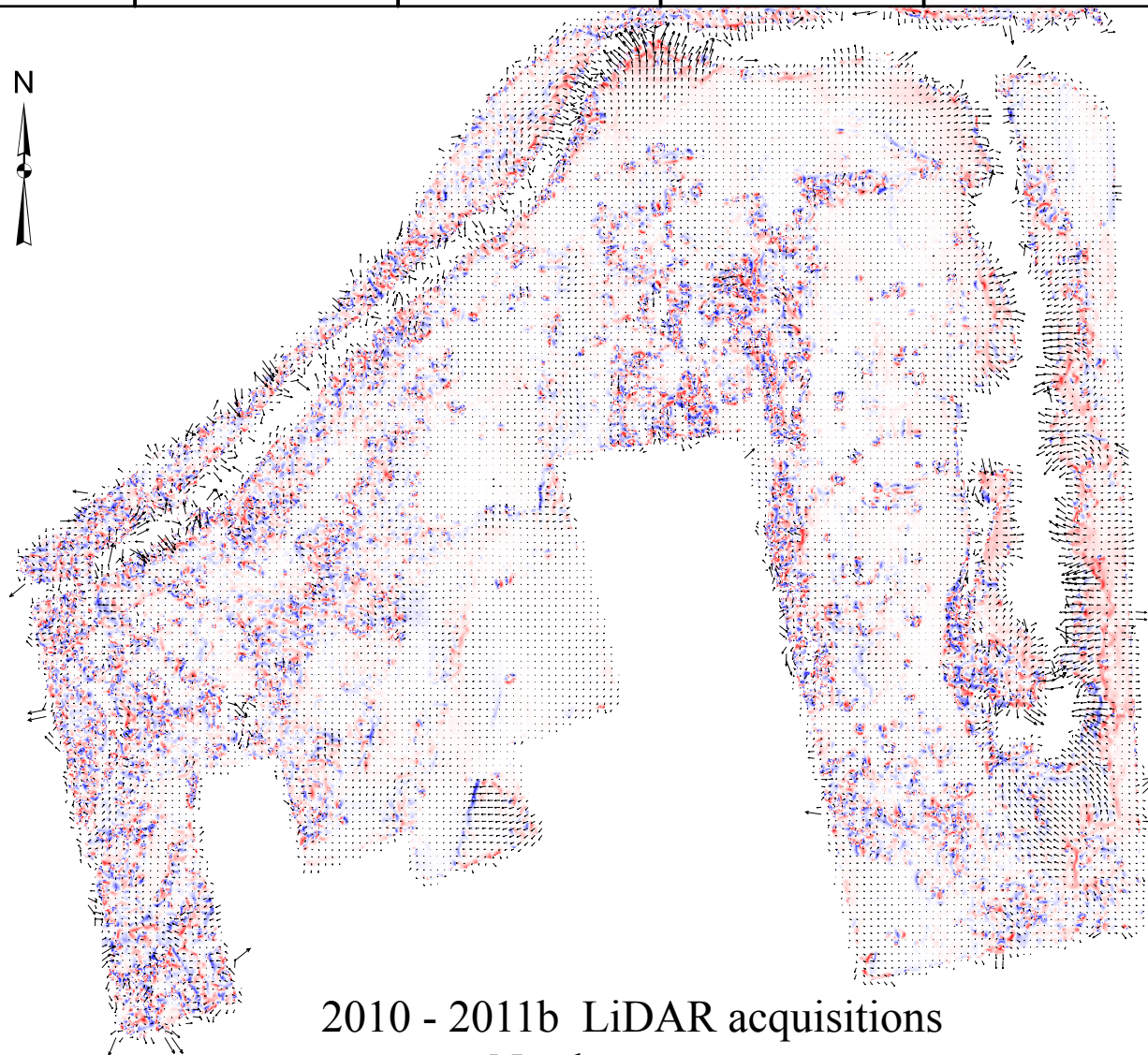
172°43' E



43°24' S

43°25' S

43°26' S



2010 - 2011b LiDAR acquisitions
Northern extent

-0.08 Areal strain 0.08



Compression

Extension

0 0.5 1 2



Kilometers

50 cm 1m 2m
Displacement vectors

Imagin' Labs Corporation
530 S. Lake Ave, #320
Pasadena, CA 91101, USA

info@imaginlabs.com